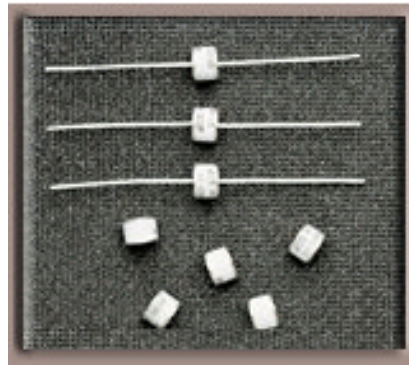


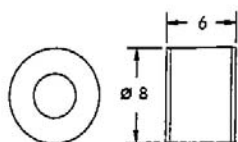
JOSLYN, MSP[®] PROTECTOR

2029-SERIES HEAVY DUTY 2-POLE GAS TUBE

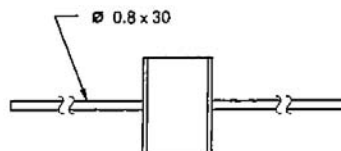


Model Numbering	2029-23	2029-25	2029-35	2029-47
DC Sparkover, 100 V/s	230 V (184-276)	250 V (200-300)	350 V (280-320)	470 V (375-565)
Impulse Sparkover, 100 V/: s	550 V	575 V	650 V	750 V
1 kV/: s	750 V	775 V	850 V	950 V
Insulation Resistance	100 V		>10 ¹⁰ S	
Glow Voltage	10 mA		70 V	
Arc Voltage			10 V	
Glow-Arc Transition Current			<1 A	
Capacitance	1 MHz		<1 pF	
DC Holdover Voltage	80 V		<150 ms	
Impulse Discharge Current	25 kA 8/20 : s †		10 Operations	
	200 A 10/1000 : s		300 Operations	
Alternating Discharge Current	20 Arms, 1 S		10 Operations	
Operating Temperature			- 55 to 250 C	
Warranty			1 Year	

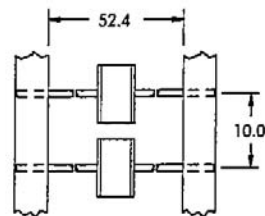
CHARACTERISTICS Test methods per ITU-T K .12



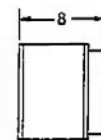
2029-xx-A



2029-xx-B



2029-xx-BT1



2029-xx-D

Electrodes are nickel plated
Lead wires are tin plated copper
Model number marking on tube: 2029-xxxV
Ceramic is treated with *Anti Trac* moisture proofing

BT1 tape sequencing per EIA RS-296-D, 1000 pcs/spool
After discharge: sparkover limits increase by 10%, measured
24 hours after discharge, resistance > 10⁸ S